

RESIDENCE #12

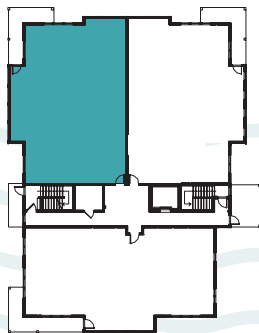
1,925 SF

2 BEDS

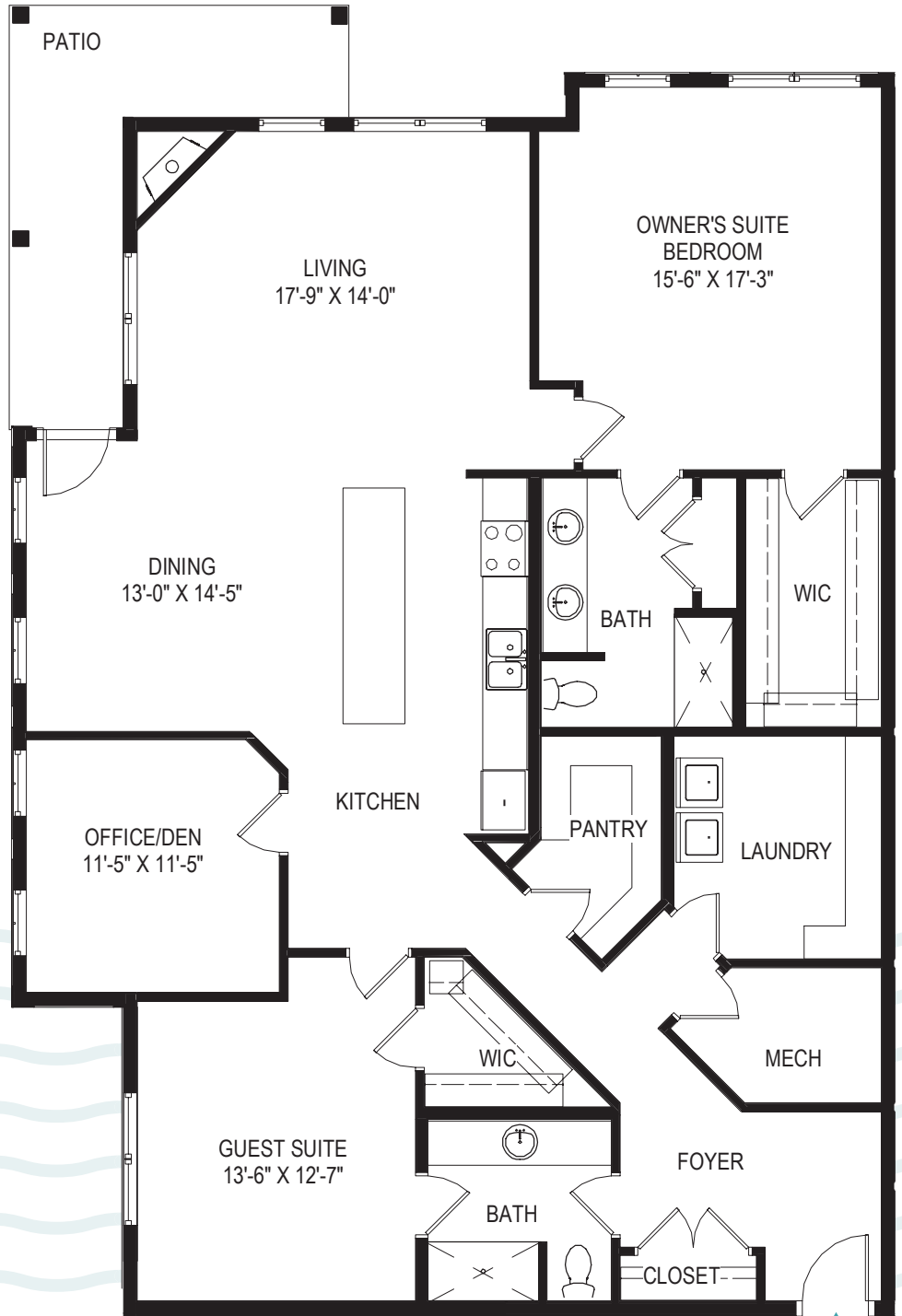
2 BATHS

OFFICE

PATIO



MAIN
ENTRANCE



960SAGAMORE.COM

603-365-1204 ~ 960 SAGAMORE AVE IN PORTSMOUTH, NH

Floorplans, square footage, dimensions, specifications, materials, availability of homes, etc., are estimates only and are subject to change at any time without further notice or obligation. Actual construction may vary according to elevation, construction variance, and/or mechanical or structural requirements and does not take into account finishes and options selected.
Equal Housing Opportunity. © 2022 960 Sagamore and Katz Development. Version 051122.

